



C200 Cloud Attached Storage™ Appliance

All-in-One Solution for NAS, Online Backup and Folder Synchronization

- Managed Network Attached Storage
- Secure & Efficient Online Backup
- Automated Folder Synchronization



2-Bay 3.5" SATA Storage Appliance with High-speed USB 2.0 and Gigabit Ethernet

Ideal for small businesses and branch offices, the C200 Cloud Attached Storage Appliance from CTERA Networks is an innovative and easy-to-use device combining Network Attached Storage (NAS) with advanced online backup and synchronization features. The CTERA C200 can be managed remotely and does not require installation of desktop software, ensuring smooth deployment and operation.

Integrated Cloud Services

CTERA's C200 seamlessly integrates with cloud services, including online backup, folder synchronization and centralized monitoring and reporting. Users can access their cloud-stored files from anywhere using a Web browser.

Efficient Online Backup

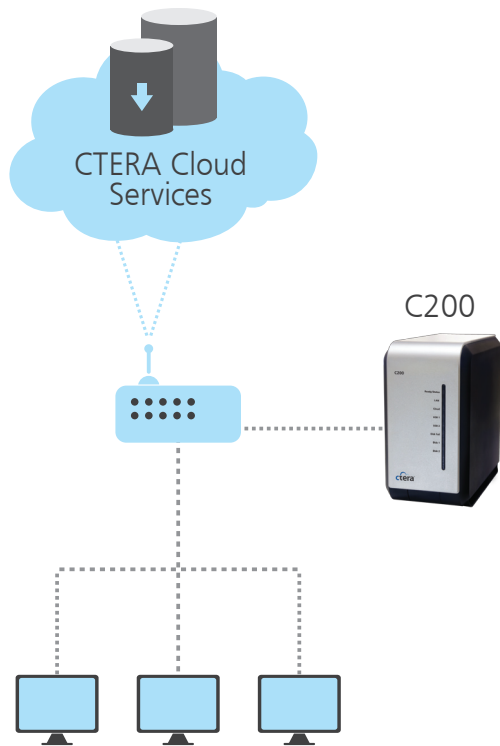
The C200 does not tax the resources of individual PCs. It performs optimized online backup in the background for the entire local network, unlike desktop-based solutions that back up individual PCs.

No Client Software

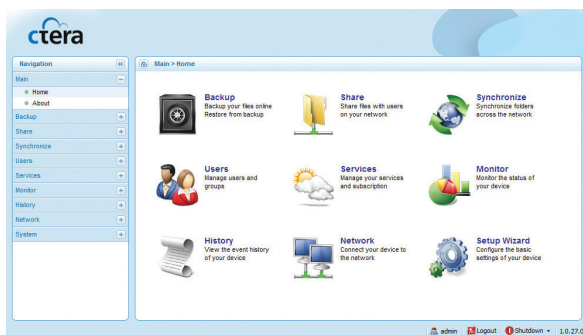
CTERA's appliances do not require installing client software on PCs or servers. This approach delivers smooth installations and eliminates the risk of OS compatibility issues and software conflicts.

Full Remote Management

Service providers and enterprises can easily use the CTERA management portal to monitor thousands of devices from a single Web based management interface.



Simply connect the C200 to your router for instant NAS with cloud services



The C200's easy-to-use Web interface

About CTERA

CTERA Networks revolutionizes storage and data protection for small businesses and SOHO users by introducing Cloud Attached Storage™, a hybrid solution that combines fast local network storage in an appliance with integrated cloud services – including secure online backup – and no software installation required. CTERA empowers service providers to deliver value-added services to their subscribers with complete infrastructure for hosting and remotely-managing subscriber data protection. For more about CTERA and Cloud Attached Storage™, visit www.ctera.com or email: info@ctera.com.

Software Features

- Web-based user interface
- Logical volumes
- Windows File Sharing
- 1-click automated folder synchronization
- Role-based user access control
- Custom email alerts and reporting
- NTFS / FAT32 / EXT3 file system
- Storage management including RAID0/1 and JBOD
- UPnP discovery
- Requires Microsoft Internet Explorer 6.0 or later, Mozilla Firefox 2.0 or later

Cloud Service Features

- Optimized incremental online backup with data compression
- Retains previous file versions up to 30 days
- Scheduled and on-demand backup
- Restore methods: Windows Previous Versions, Virtual backup drive, Local Web interface or online via CTERA Portal
- Secure Web-based portal provides access to files from anywhere
- Backup contents secured using 256-bit AES encryption and SHA-1 fingerprints, with a key known only to you
- All communications to the Cloud Service are secured by SSL (Secure Sockets Layer)

Hardware Specifications

- 2 x 3.5" SATA Hot Swap hard drive support with S.M.A.R.T
- 2 x USB 2.0 high-speed ports for external drives
- 1 x Gigabit Ethernet
- Power consumption 50W
- FCC, CE, RoHS, WEEE compliance
- Operating environment 0-40°C, Humidity 5%-90% (non-condensed)
- Dimensions: 162.5(H) x 210(D) x 95(W) mm / 6.4(H) x 8.27(D) x 3.74(W) inch
- Weight 1.1Kg (excluding hard drives)

CTERA Networks US

2225 E. Bayshore Road, Suite 200
Palo Alto, CA 94303
Tel: (650) 227-4950

CTERA Networks Ltd.

24 Imber St., Petah Tikvah
Israel 49511
Tel: +972-3-919-2061